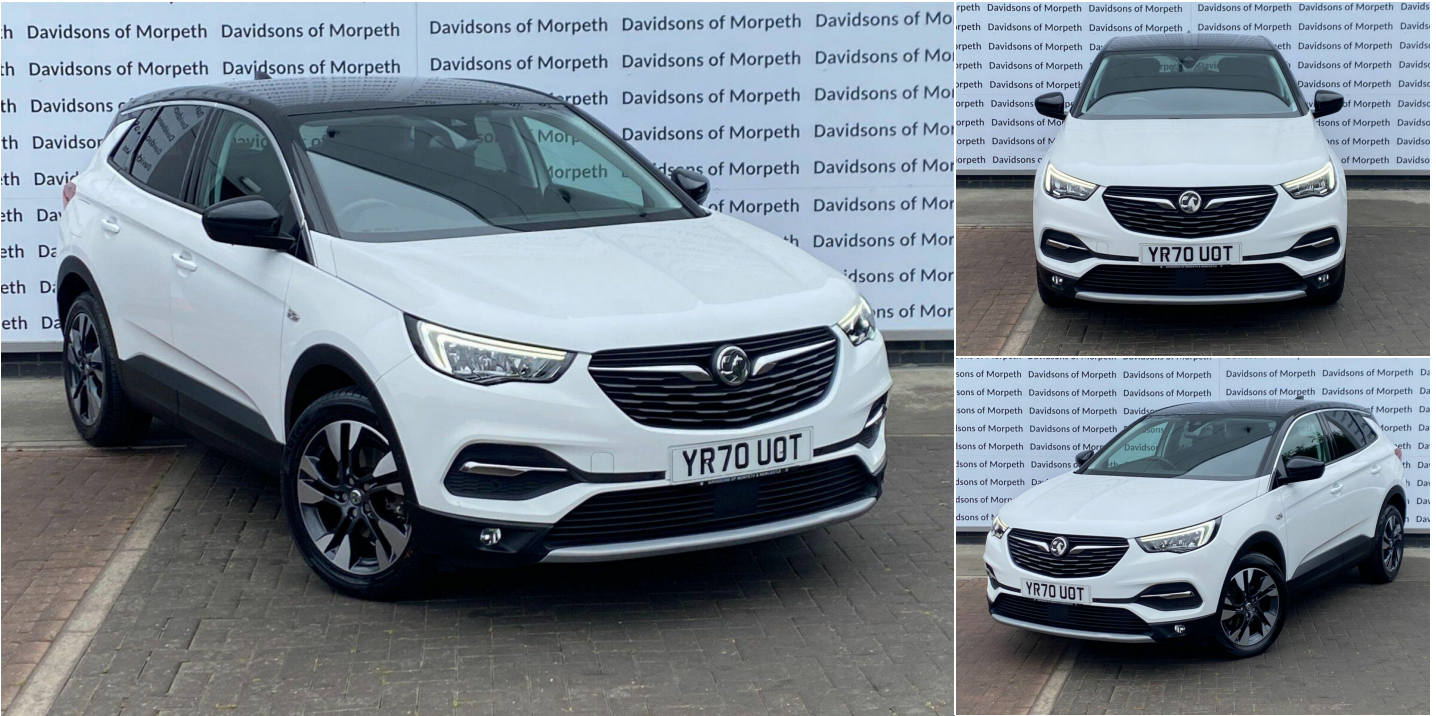


2020(70) Vauxhall Grandland X

£10,495

1.2 Turbo Griffin Euro 6 (s/s) 5dr 1.2l Manual



Registered
2020(70)



Mileage
61,630 miles



Engine Size
1.2 l



Fuel Type
Petrol



Transmission
Manual



Fuel Consumption
N/A

Description

12V Electrical Accessory Socket, 18in Alloy Wheels - Five Spoke Diamond-Cut - Technical Grey, 60-40 Split-Folding Rear Seat Back, ABS - Anti Lock Brakes, Advanced Predictive Logic Control System, Airbags - Front Seat Side-Impact, Alloy Effect Protective Front and Rear Skid Plates, Ambient Lighting, Anti-Submarining Ramps in Front Seats, Automatic Air Direction and Fan Speed, Automatic Lighting and Windscreen Wipers, Automatic Tilting Door Mirrors, Automatically Dimming Anti-Dazzle Rear-View Mirror, Black Door Panels with Black Premium Leather-Effect Inserts, Black Roof and Door Mirrors, Body Coloured Door Handles, CSC - Corner Stability Control, Central Facia Display, Charcoal Filter, Child Proof Locks on Rear Doors, Chrome Effect Front Grille Bar, Chrome Effect Interior Door Handles, Chrome Effect Side Window Upper Trim, Collapsible Windscreen Wiper System, Covered Storage Compartment in Centre Console and Drivers Armrest, Cruise Control with Speed Limiter and Intelligent Speed Adaptation, Dark Tinted Rear Windows, Deactivation Switch For Front Passengers Front and Side Impact Airbags, Deflation Detection System, Deformation Zones Front and Rear, Door to Door Illumination, Driver Information Display, Drivers Centre Armrest, Drivers and Front Passengers Airbags, Drivers and Front Passengers Seats - 16-Way Adjustable, Drivers and Front Passengers Sunvisors with Illuminated Vanity Mirrors, Dual Seatbelt Pretensioners on Front Seats, Dual-Zone Electronic Climate Control, EBD - Electronic Brakeforce Distribution, Electric Parking Brake, Electrically Foldable Door Mirrors with Puddle Lights, Electrically Operated Front and Rear Windows with Safety Autoreverse and One-Touch Facility, Electronic Climate Control including Air Conditioning, Electronically Protected Audio Equipment, Energy Absorbing Steering Column, Engine Deadlock Immobiliser, Engine Drag Torque Control, Ergonomic Active Front Seats - AGR-Approved - Campaign for Healthier Backs is an independent centre of excellence for ergonomics based in Germany, Four Adjustable Facia Vents, Front Door Pockets with 2.6litre Capacity, Front Door Sill Covers - Alloy-Effect, Front Fog Lights, Front and Rear Parking Distance Sensors, Front and Rear Passengers Assist Handles, Fuel Gauge with Low Fuel Warning Light, Full Size Curtain Airbags for Driver - Front Passenger and Outer Rear Seat Passengers, Gloss Black B-Pillars, Hazard Warning Lights, Heated Rear Screen with Timed Cut-Off, Height Adjustable Front Seat Head Restraints, Height Adjustable Rear Seat Head Restraints, High-Level Centre Brake Light, Hill Start Assist, Hydraulic Brake Assist, Illuminated Controls, Inertia-Reel Lap and Diagonal Seatbelts, Interior Courtesy Light Operated By Door Switches, Intermittent Rear Window Wash-Wipe, Keyless Entry and Engine Start-Stop Button with Power Tailgate, LED Daytime Running Lights, LED Headlights, LED Tail Lights, Lane Departure Warning, Lights On Audible Warning, Load Limiters Outer Rear Seatbelt Retractors, Locking Wheel Nuts, Luggage Compartment 12V Electrical Accessory Socket, Luggage Compartment Cover, Luggage Compartment Foldable Cover, Multi-Function Trip Computer, Navi 5.0 Intellilink Touchscreen Navigation and Infotainment System, Premium Lighting, Pretensioners on Outer Rear Seatbelt Retractors, Rake and

Reach Adjustable Steering, Rear Door Pockets with 1.8litre Capacity, Rear Fog Light, Rear Passenger Compartment Heating Ducts, Rear Spoiler, Reinforced Passenger Safety Cell, Remote Control Central Locking, Remote Control Security Alarm System, Rev Counter, Reversing Lights, Safety Pack, Sanora Gold Facia and Door Panel Inserts, Shift Up Indication Light, Side Blind Spot Alert, Side Impact Protection Beams, Side Protection Mouldings, Side Window Demist Vents, Six Speakers - Four Front-Two Rear, Smart Seatbelt Reminder for Front and Rear Seats, Sound Absorbing Windscreen, Speed Sign Recognition, Speed-Sensitive Electric Power-Assisted Steering, Speedometer, Steering Wheel - Three-Spoke Design - Leather Covered - Satin Chrome-Effect Bezel, Steering Wheel Mounted Audio Controls, Storage Pockets on Front Seat Backs, Switchable Electronic Stability Programme - ESP, Tinted Windows, Toba Grey Facia and Door Panel Inserts, Traction Control, Two Drinks Holders in Centre Console, Two Folding Keys - Each with Integral Remote Control Function, Two Speed Windscreen Wipers with Variable Intermittent Wipe, Upper and Lower Bumper Design, VIN - Visible Vehicle Identification Number, Vauxhall Connect, Ventilated Glovebox with Lid, Versatility Pack, Water Temperature Gauge with Warning Light, Welcome Lighting, Windscreen Demist Vents, i-Size Compatible Child Seat Mountings Located on Front Passenger and Outer Rear Seats

Davidsons of Morpeth

Coopies Way, Morpeth, Northumberland, NE61 6JN United Kingdom

01670 512 115

Opening Hours

Monday	08:30 - 18:00
Tuesday	08:30 - 18:00
Wednesday	08:30 - 18:00
Thursday	08:30 - 18:00
Friday	08:30 - 18:00
Saturday	09:00 - 17:00
Sunday	Closed

Every effort has been made to ensure the accuracy of the information above, however, errors may occur. Do not rely entirely on this information but check with your centre about items which may affect your decision to purchase.